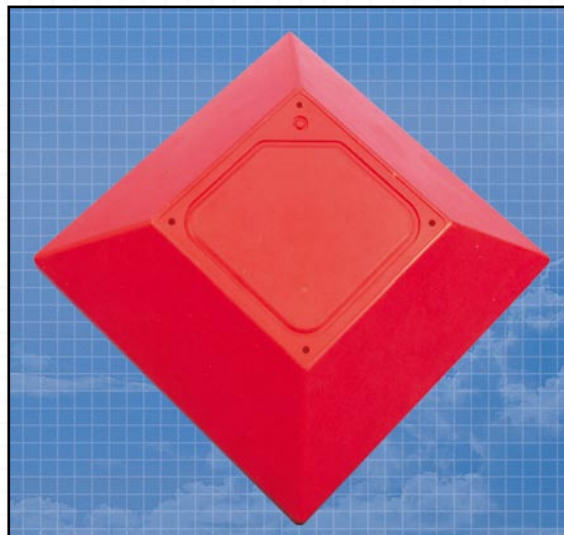
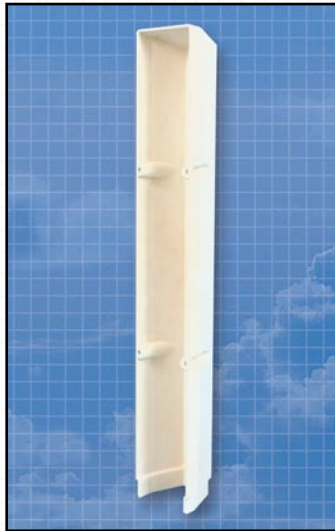


# GAS

# METERING ENCLOSURES

KMG gas metering enclosures are manufactured from Glass reinforced plastic and are approved by Local Gas Suppliers. There are two main types available, recessed and surface mounted. We also manufacture Risers covers to cover pipes to the gas meter as seen below.



**Clockwise from top left:**

- Surface mounted gas box c/w riser cover
- Riser pipe cover
- Recessed gas meter enclosure
- Gas heater cowl
- Ground mounted gas meter cabinet c/w legs



# GAS METERING ENCLOSURES SPECIFICATIONS

## Builders instructions

- 1 Check that the enclosure is not damaged in any way.
- 2 The Recessed Gas Enclosure (built-in) must be built into the wall, in a position specified by the Local Gas Authority.
- 3 Outlet pipework must not go through the rear of the enclosure. Outlet pipework must be run from the meter and down through the correct outlet hole on the enclosure. If in doubt, consult the Local Gas Authority.
- 4 Surface Mounted and Ground Mounted Enclosures are to be installed in the correct manner as per Local Gas Authority.
- 5 The enclosures must not be drilled or nailed in place or the chasing pierced in any way.

## Correct position of the enclosures

- 1 Recessed Enclosures (built-in) are normally fitted to 9" cavity walls. If this is not the case, please consult your Local Gas Authority.
- 2 Always install the enclosure level and square.
- 3 Always ensure that the proposed gas service entry position from ground level is to the correct side, and clear of obstructions such as drains, footings and other ground works.
- 4 Access must be available for the Local Gas Authority to monitor and maintain the Gas Metering Equipment.
- 5 The enclosure should be installed where the customer can easily gain access from their property.
- 6 The enclosure should not be positioned where it is likely to be damaged by gates, doors etc.

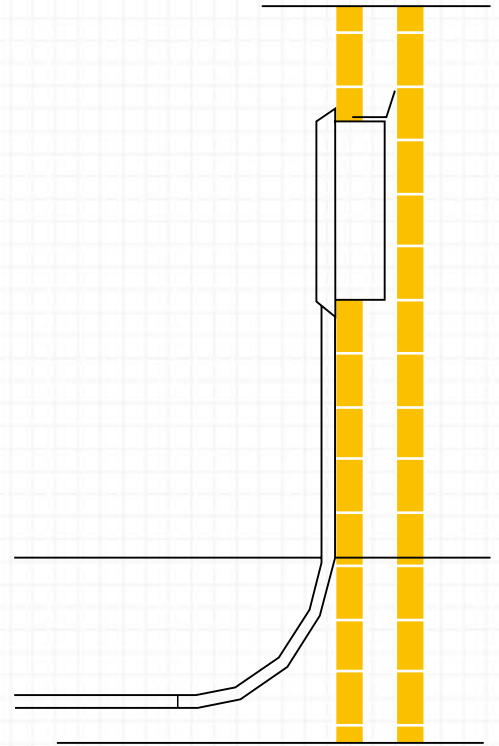
It is a legal requirement that only competent people carry out any work in relation to a gas fitting. Employers have a responsibility to ensure that all employees undertaking work on any gas fitting are competent.



Typical location of Recessed Gas Enclosure at the side of the house. This is also a suitable location for the ESB Box, manufactured by KMG Ltd.

Other products from KMG Ltd include:

- **Meter Cabinet 2004 Specification**
- **IP65 Meter cabinet**
- **Agri Box**
- **3 Phase Cabinets**
- **Cable Box (ETU)**
- **63mm Riser Cover**
- **32mm Riser Cover**
- **Safety products**
- **Kiosks & GRP Enclosures**
- **Distribution Box**



Head Office: Killarney Manufacturing Group, Ballyspillane Ind Estate, Killarney, Co Kerry, Ireland

Ireland Tel + 353 64 32421 • UK Tel + 44 1453 791616

Email: [info@kmggroup.eu](mailto:info@kmggroup.eu) • Web: [www.kmggroup.eu](http://www.kmggroup.eu)



In accordance with Killarney Manufacturing Group's normal policy of product development this specification is subject to change without notice.