

**Part Number: 900019**

**Description : 8" Internal Elbow for Overflow Assembly (Type 16)**

Note : The above is a Complete Item.

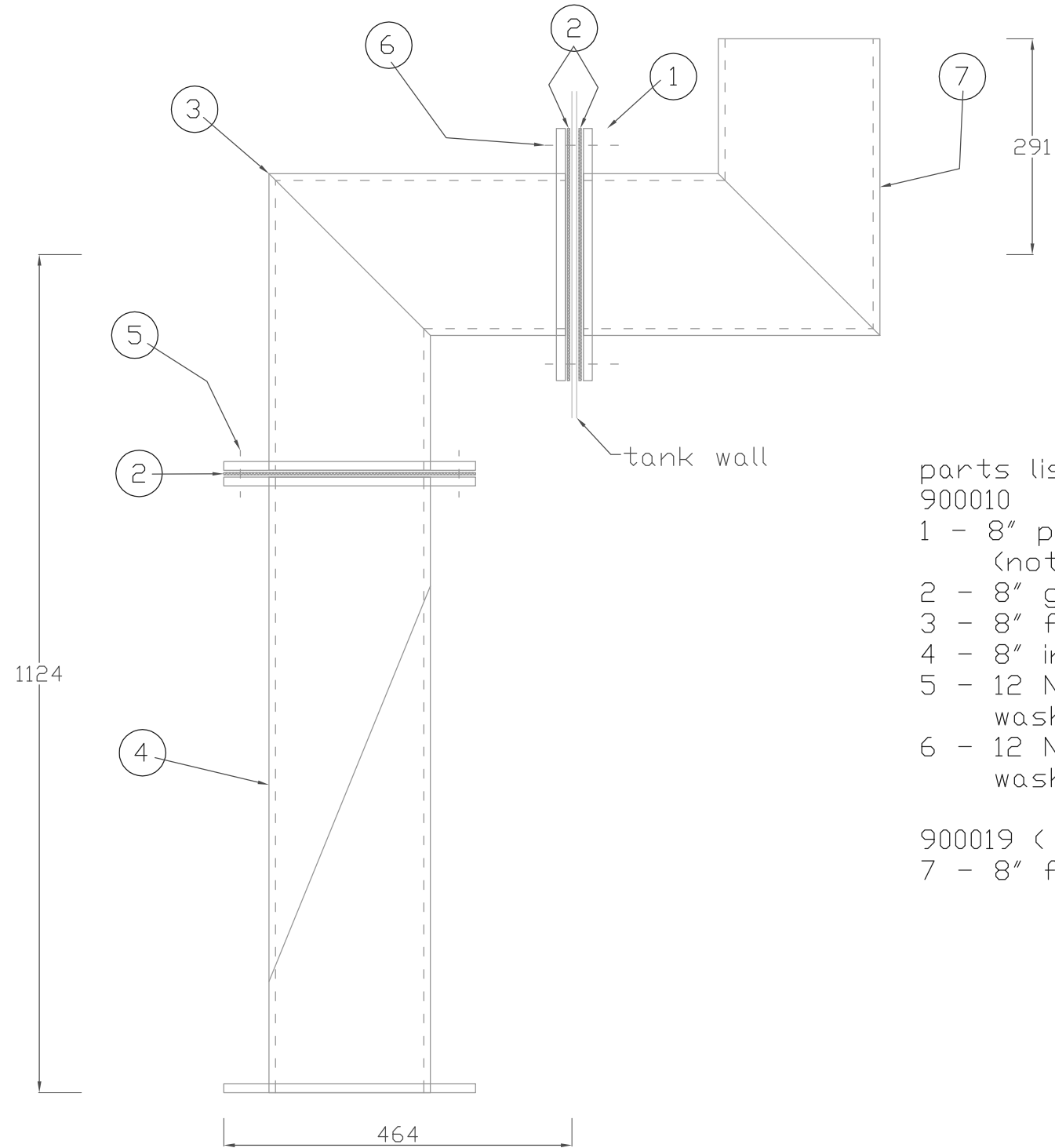
Sub Assemblies: N/A

Printed copies of this document are uncontrolled unless otherwise stated.





# PRODUCT SPECIFICATION



- parts list  
900010
- 1 - 8" pvc backing ring  
(not used with internal elbow)
  - 2 - 8" gasket
  - 3 - 8" fabricated 90° elbow
  - 4 - 8" intersect unit
  - 5 - 12 No. ( M20x70 bolt, 2xM20 washer, M20 nut, galv )
  - 6 - 12 No. ( M20x80 bolt, 2xM20 washer, M20 nut, S/S )
- 900019 ( single item )  
7 - 8" fabricated plain 90° elbow

<p><u>Note:</u> Printed copies of this document are uncontrolled unless otherwise stated</p>	<p><b>Part Number:</b> <b>900019</b></p>		<h1 style="margin: 0;">KMG</h1>		<p><b>Title:</b> G/A OF 8" INTERNAL ELBOW FOR OVERFLOW ASSEMBLY TYPE 16</p>	
	<p><u>Scale:</u> 1:8</p>	<p><u>Material:</u> various</p>	<p><u>Rev:</u></p>	<p><u>Tol:</u></p>	<p><u>Drawn:</u> JPC</p>	<p><u>App'd:</u></p>
		<p><u>Date:</u> 30/04/2009</p>	<p><u>Dwg. Number:</u> 900019</p>			